



EZCON

EZC36TLC

Crawler Excavator



High-Efficiency King
high return rates

Engine Model	: Cummins 6LTAA 8.9-C325
Gross Power	: 241 kW/2100rpm
Operating Weight	: 36,000kg
Bucket Capacity	: 2.5 m

www.ezconcorp.com / sales@ezconcorp.com

CHAIN MOUNTED EXCAVATOR

FRIENDLY ENVIRONMENT
LOW MOVEMENT COST
COMFORTABLE DRIVE
HANDY OPERATION
EASY MOVEMENT
FUEL EFFECINCEY

EZC-36TLC

OPERATING WEIGHT

36 000 kg (79 366 lb) –

HORSE POWER (NET)

241 kW (323Hp)



EXCAVATE YOUR EARTH AND WASTE

www.ezconcorp.com

CRAWLER EXCAVATOR



EZCON
CORPORATION



**Engineered
for
Productivity
and
Precision**

EZC-36TLC

**ROAD AND HIGHWAY
CONSTRUCTION
LANDFILL
FORESTRY
FOUNDRY
QUARRY**

CRAWLER EXCAVATOR

www.ezconcorp.com

EZC36TLC SPECIFICATIONS

ENGINE

Model	Cummins 6LTA 8.9-C325
Type	High pressure common rail, turbocharged
No. of cylinder	6
Emission	Tier 2 / Stage II
Displacement	8.9L
Power output	241kW (323hp)/2100rpm

HYDRAULIC SYSTEM

Type	Variable double piston pump plus gear pump
Max. discharge flow	300x2L/min

DIGGING FORCE (ISO6015)

Bucket	254kN
Arm	174kN

BUCKET

Type	Backhoe bucket
Capacity	1.8-2.5 m ³
Width	1730mm

TRAVEL SYSTEM

Type	Axial variable plunger motor
Track roller	8X2
Carrier roller	2X2
Track shoe	49X2
Travel speed	3.0/4.9km/h
Max. Drawbar pull	315kN
Gradeability	70% (35°)

SWING SYSTEM

Swing motor type	Swash plate plunger motor
Swing speed	0-10.5r/min
Brake type	Pressure release, mechanical braking

REFILL CAPACITIES & LUBRICATIONS

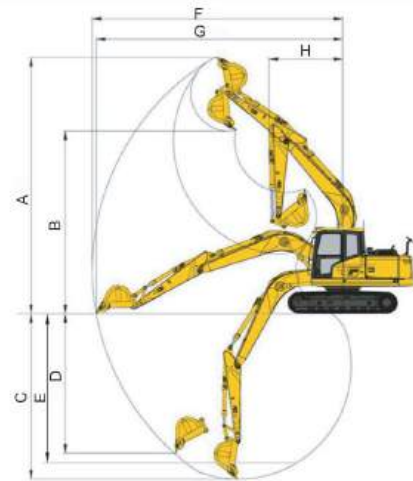
Fuel tank	620L
Cooling system	35L
Engine oil	28L
Hydraulic oil tank	300L
System Capacity	420L

OPERATING WEIGHT AND GROUND PRESSURE

Shoe width	750mm
Ground pressure	68.3kPa
Operating weight	36000kg

SCOPE OF WORK (mm) (BOOM: 6470 mm ARM: 2912 mm)

A	Max. digging height	10110
B	Max. dumping height	6970
C	Max. digging depth	6995
D	Max. vertical digging depth	5460
E	Max. depth cut for 2500mm level bottom	7190
F	Max. digging distance	10840
G	Max. digging radius at ground level	10630
H	Min. swing radius of work equipment	4430



DIMENSIONS (mm)

A	Overall length	11265
B	Ground contact length (Transportation)	6890
C	Overall height (to top of boom)	3785
D	Overall width	3200
E	Overall height (to top of cab)	3290
F	Counter weight ground clearance	1340
G	Ground clearance	565
H	Tail swing radius	3520
I	Tread	4080
J	Track length	5045
K	Track gauge	2600
L	Track width	3200
M	Shoe width	750
O	Bonnet height	2910
P	Revolving frame width	3190
Q	Distance from swivel center to tail	3465

