

CHAIN MOUNTED DOZER

FRIENDLY ENVIRONMENT
LOW MOVEMENT COST
COMFORTABLE DRIVE
HANDY OPERATION
EASY MOVEMENT
FUEL EFFECINCEY



EZC-CD150

OPERATING WEIGHT

24 100 kg (53,131 lb) –

24 570 kg (54,167 lb)

HORSE POWER (NET)

175 kW (235 Hp)

EZC-CD150EX

OPERATING WEIGHT

26 660 kg (58,775 lb) –

26 760 kg (58,995 lb)

HORSE POWER (NET)

175 kW (235 Hp) –

EZC-CD150M

OPERATING WEIGHT

28 200 kg (62,170 lb) –

28 250 kg (62,280 lb)

HORSE POWER (NET)

175 kW (235 Hp) –

DOZER YOUR EARTH AND WASTE

CRAWLER DOZER



ISO 14001:2015



9001:2015

EZCON
CORPORATION



**Engineered
for
Productivity
and
Precision**

EZC-CD150 SERIES

**ROAD AND HIGHWAY
CONSTRUCTION
LANDFILL
FORESTRY
FOUNDRY
QUARRY**

CRAWLER CHAIN DOZERS

ENGINE

	EZC-CD150	EZC-CD150 EX	EZC-CD150M	EZC-CD150XL	EZC-CD150XLS
Make and model	NT855-C280S10	NT855-C280S10	NT855-C280S10	NT855-C280S10	NT855-C280S10
Emissions standard	EUII/EU Stage IIIA	EUII/EU Stage IIIA	EUII/EU Stage IIIA	EUII/EU Stage IIIA	EUII/EU Stage IIIA
Displacement	14,000 CC	14,000 CC	14,000 CC	14,000 CC	14,000 CC
Bore and stroke	140x152 mm	140x152 mm	140x152 mm	140x152 mm	140x152 mm
Gross horsepower, SAE J1995	175 kW (235 Hp)	175 kW (235 Hp)	175 kW (235 Hp)	175 kW (235 Hp)	175 kW (235 Hp)
Net horsepower, SAE J1349/ISO 9249 at max. speed of hydraulic fan	162 kW (217 Hp) -	162 kW (217 Hp) -	162 kW (217 Hp)	162 kW (217 Hp)	162 kW (217 Hp)
Rated RPM	1,800	1,800	1,800	1,800	1,800
Max. torque	1080N.m @ 1300RPM 1,500 rpm	1080N.m @ 1300RPM 1,500 rpm	1080N.m @ 1300RPM 1,500 rpm	1080N.m @ 1300RPM	1080N.m @ 1300RPM 1,500 rpm
Air cleaner	2-stage, dry type, with dash mounted electronic service indicator	2-stage, dry type, with dash mounted electronic service indicator	Cummins Filtration Direct Flow™, dry type, exhaust aspiration, with dash-mounted electronic service indicator	2-stage, dry type, with dash mounted electronic service indicator	Cummins Filtration Direct Flow™, dry type, with dash-mounted electronic service indicator
Cold-starting aid	Grid heater	Grid heater	Ether	Grid heater	Ether
Slope operation, max. angle	45				

COOLING

	EZC-CD150	EZC-CD150 EX	EZC-CD150M	EZC-CD150XL	EZC-CD150XLS
Type	Suction-type fan, belt driven with perforated engine side sheets and heavy duty louvered front grill	Suction-type fan, belt driven with perforated engine side sheets and heavy duty louvered front grill	Suction-type variable-speed fan, hydraulically driven with perforated engine side sheets and heavy duty louvered front grill	Suction-type fan, belt driven with perforated engine side sheets and heavy duty louvered front grill	Suction-type variable-speed fan, hydraulically driven with perforated engine side sheets and heavy duty louvered front grill
Engine coolant rating	-37 C (-34 F)				

BRAKES

	EZC-CD150	EZC-CD150 EX/EZC-CD150M	EZC-CD150XL/EZC-CD150XLS
Service	Spring applied hydraulically released multi-disc wet brakes. Foot pedal controlled.		
Parking	The steering brakes also act as service and parking brakes. Service brakes are locked automatically when the transmission safety lever is actuated or when the engine is cut off.		

ELECTRICAL

	EZC-CD150	EZC-CD150 EX/EZC-CD150M	EZC-CD150XL	EZC-CD150XLS
Voltage	24 V			
Number of batteries	2			
Battery capacity	960 CCA	815 CCA	815 CCA	
Alternator rating	70 A	50 A	50 A	80 A
Lights	8 total; cab mounted (2F & 2R), 2F lift cylinders and 2R fuel tank mounted			

HYDRAULICS

	EZC-CD150	EZC-CD150 EX/EZC-CD150M	EZC-CD150XL/EZC-CD150XLS
Type	Open-center hydraulic system with fixed-displacement tandem-gear pumps		Open-center hydraulic system with fixed-displacement multiple-pumps gear type
Pump displacement	135 L/min (35.7 gpm)	173 L/min (46 gpm) / 204 L/min (53.9 gpm)	239.7 L/min (63.3 gpm)
System relief pressure	17.5 MPa (2,540 psi)	17.2 MPa (2,500 psi)	blade lift & ripper 17.3 MPa (2,500 psi); blade tilt 18.6 MPa (2,670 psi)
Control	single joystick lever		

OPERATOR STATION

	EZC-CD150	EZC-CD150 EX/EZC-CD150M	EZC-CD150XL/EZC-CD150XLS
	ROPS (ISO 3471 - 2008) and FOPS (ISO 3449 - 2005) Latest facilities and modern design		

SERVICEABILITY

	EZC-CD150	EZC-CD150 EX	EZC-CD150M	EZC-CD150XL	EZC-CD150XLS
Refill Capacities					
Fuel tank	450 L (119US gal)	3450 L (119US gal)	450 L (119US gal)	450 L (119US gal)	450 L (119US gal)
Cooling system	79 L (21 US gal)	79 L (21 US gal)	79 L (21 US gal)	50 L (13.5 US gal)	37 L (9.8 US gal)
Engine oil	45 L (11 US gal)	45 L (11 US gal)	45 L (11 US gal)	22.5 L (6 US gal)	
Transmission system	125 L (33 US gal)	153 L (40.4 US gal)		173 L (45.8 US gal)	
Final drive, each side	STD & LT 82 L (21 US gal) LGP 46 L (12 US gal)	40 L (10.6 US gal)		38 L (10 US gal)	
Hydraulic reservoir	60 L (15.6 US gal)	60 L (16 US gal)		115 L (30.4 US gal)	
AdBlue (DEF)	-	-	20 L (5.3 US gal)	-	37.5 L (10 US gal)



POWERTRAIN

	EZC-CD150	EZC-CD150 EX/EZC-CD150M	EZC-CD150XL/EZC-CD150XLS
Transmission	Single stage torque converter drives to transmission through a double universal joint. Modular, countershaft type power shift transmission, electro-hydraulic control. Preset travel speed and auto-downshift.		
Torque converter stall ratio	2.1:1	2.6:1	2.3:1
Steering	Exclusive 2-speed geared steering module provides gradual turns while maintaining full power to both tracks plus conventional clutch-brake performance for tight or pivot turns. Coupled to 3-speed transmission, the 2-speed steering provides 6 speeds forward and 6 reverse. The left hand joystick controls transmission and steering drive for up and down shifting, steering, Hi/Lo selection and LH/RH gradual turn.		
Final drives	Double-reduction final drives mounted independently of track frames and dozer push arms for isolation from shock loads	Double-reduction final drives mounted independently of track frames and dozer push arms for isolation from shock loads	Double-reduction planetary type final drives mounted independently of track frames and dozer push arms for isolation from shock loads
Total ratio	10.32 to 1	12.1 to 1	17.56 to 1

Travel speeds		EZC-CD150	
Gear	Range	Forward	Reverse
1st	Low	2.9 km/h (1.8 mph)	3.6 km/h (2.2 mph)
	High	4.0 km/h (2.5 mph)	4.8 km/h (3.0 mph)
2nd	Low	5.0 km/h (3.1 mph)	6.0 km/h (3.7 mph)
	High	6.6 km/h (4.1 mph)	8.0 km/h (5.0 mph)
3rd	Low	8.2 km/h (5.1 mph)	9.8 km/h (6.1 mph)
	High	11.8 km/h (7.3 mph)	12.9 km/h (8.0 mph)
Maximum drawbar pull		355 kN (79,807 lb)	

Travel speeds		EZC-CD150 EX		EZC-CD150M	
Gear	Range	Forward	Reverse	Forward	Reverse
1st	Low	2.7 km/h (1.7 mph)	3.2 km/h (2.0 mph)	2.8 km/h (1.7 mph)	3.3 km/h (2.1 mph)
	High	3.6 km/h (2.2 mph)	4.3 km/h (2.7 mph)	3.8 km/h (2.4 mph)	4.5 km/h (2.8 mph)
2nd	Low	4.9 km/h (3.0 mph)	5.7 km/h (3.5 mph)	5.0 km/h (3.1 mph)	6.0 km/h (3.7 mph)
	High	6.5 km/h (4.0 mph)	7.6 km/h (4.7 mph)	6.7 km/h (4.2 mph)	8.0 km/h (5.0 mph)
3rd	Low	7.7 km/h (4.8 mph)	9.0 km/h (5.6 mph)	8.0 km/h (5.0 mph)	9.3 km/h (5.8 mph)
	High	10.2 km/h (6.3 mph)	11.9 km/h (7.4 mph)	10.5 km/h (6.5 mph)	12.3 km/h (7.6 mph)
Maximum drawbar pull		535.3 kN (118,688 lb)			

Travel speeds		EZC-CD150XL		EZC-CD150XLS	
Gear	Range	Forward	Reverse	Forward	Reverse
1st	Low	2.9 km/h (1.8 mph)	3.6 km/h (2.3 mph)	2.9 km/h (1.8 mph)	3.4 km/h (2.1 mph)
	High	3.7 km/h (2.3 mph)	4.5 km/h (2.8 mph)	3.7 km/h (2.3 mph)	4.4 km/h (2.7 mph)
2nd	Low	5.2 km/h (3.2 mph)	6.1 km/h (3.8 mph)	5.2 km/h (3.2 mph)	6.1 km/h (3.8 mph)
	High	6.7 km/h (4.2 mph)	8.0 km/h (5.0 mph)	6.7 km/h (4.2 mph)	7.9 km/h (4.9 mph)
3rd	Low	9.0 km/h (5.6 mph)	9.7 km/h (6.0 mph)	8.2 km/h (5.1 mph)	9.6 km/h (6.0 mph)
	High	10.6 km/h (6.6 mph)	12.6 km/h (7.8 mph)	10.5 km/h (6.5 mph)	12.2 km/h (7.6 mph)
Maximum drawbar pull		620 kN (139,382 lb)		640 kN (143,878 lb)	

UNDERCARRIAGE

	EZC-CD150 (STD<)	EZC-CD150 (LGP)
Suspension	Oscillation-type with equalizer bar and forward mounted pivot shafts	
Tracks	Large deep-heat-treated for maximum wear resistance	
Track gauge	2250 mm (88.5 in)	2250 mm (88.5 in)
Track shoe width	910 mm (36 in)	915 mm (36.1 in)
Chain and rollers	Sealed and lubricated track links and through-hardened, sealed, and lubricated rollers	
Shoes, each side	STD 40 / LT 45	46
Track rollers, each side	STD 7 / LT 8	8
Track length on ground	STD 3110 mm (122 in) LT 3 170 mm (125 in)	3 170 mm (125 in)
Ground contact area	STD 29 000 cm ² (4,495 in ²) LT 36 000 cm ² (5,580 in ²)	58 000 cm ² (8,990 in ²)
Ground pressure	STD 55.5 kPa (8.0 psi) LT 47.5 kPa (6.9 psi)	31.4 kPa (4.6 psi)
Track pitch	190.5 mm (7.5 in)	
Sprocket sements, each side	1	

	EZC-CD150 EX/EZC-CD150M	EZC-CD150XL/EZC-CD150XLS	EZC-CD150XL/EZC-CD150XLS (LGP)	
Suspension	Oscillation-type with equalizer bar and forward mounted pivot shafts			
Tracks	Large deep-heat-treated for maximum wear resistance			
Track gauge	2210 mm (87 in)	2 030 mm (80 in)	2 160 mm (85 in)	
Track shoe width	900 mm (20 in)	762 mm (30 in)	940 mm (37 in)	
Chain and rollers	Sealed and lubricated track links and through-hardened, sealed, and lubricated rollers			
Shoes, each side	STD 39 / LT 43	43	43	
Track rollers, each side	STD 7 / LT 8	8	8	
Track length on ground	STD 2 640 mm (104 in) LT 3 050 mm (120 in)	3 050 mm (120 in)	3 050 mm (120 in)	
Ground contact area	STD 31 000 cm ² (4,800 in ²) LT 31 000 cm ² (4,800 in ²)	46 000 cm ² (7,200 in ²)	57 000 cm ² (8,880 in ²)	
Ground pressure	STD 75.4kPa (10.9 psi) LT 65.8 kPa (9.5 psi)	44.9 kPa (6.5 psi)	45.7 kPa (6.7 psi)	36.9 kPa (5.4 psi) 37.4 kPa (5.5 psi)
Track pitch	203.2 mm (8.0 in)	203.2 mm (8.0 in)		203.2 mm (8.0 in)
Sprocket sements, each side	1			

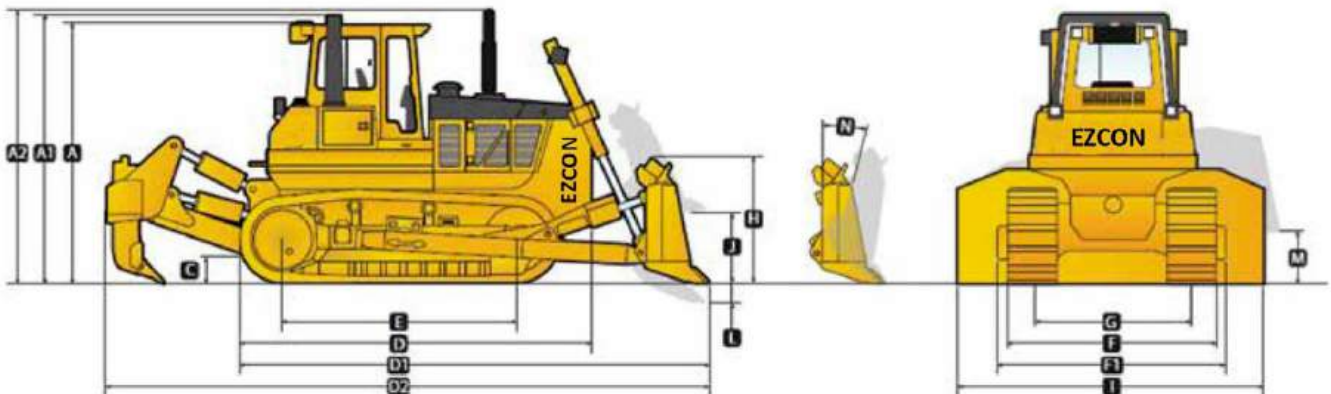
	EZC-CD150XL/EZC-CD150XLS (STD<)	EZC-CD150XL/EZC-CD150XLS (LGP)
Suspension	Oscillation-type with equalizer bar and forward mounted pivot shafts	
Tracks	Large deep-heat-treated for maximum wear resistance	
Track gauge	2220 mm (87 in)	2 180 mm (86 in)
Track shoe width	560 mm (22 in)	864 mm (34 in)
Chain and rollers	Sealed and lubricated track links and through-hardened, sealed, and lubricated rollers	
Shoes, each side	STD 40 / LT 42	42
Track rollers, each side	7	
Track length on ground	STD 2 860 mm (113 in) / LT 3 080 mm (121 in)	3 080 mm (121 in)
Ground contact area	STD 32 000 cm ² (4,972 in ²) / LT 34 000 cm ² (5,324 in ²)	53 000 cm ² (8,228 in ²)
Ground pressure	STD 72.4 kPa / LT 68.8 kPa	52 kPa
Track pitch	215.9 mm (8.5 in)	
Sprocket sements, each side	1	

OPERATING WEIGHTS

	EZC-CD150 (STD & LT)	EZC-CD150 (LGP)
Base weight (with 6-WAY blade, standard equipment, cab ROPS/FOPS, full fuel tank, and 79 kg (175 lb) operator)	STD 24 100 kg (53,131 lb) / LT 24 200 kg (53,352 lb)	24 570 kg (54167 lb)
Optional Components		
Ripper 3-shank type		1 644 kg (3,551 lb)
Track shoes		
610 mm (24 in)		STD 128 kg (282 lb) / LT 146 kg (322 lb)

	EZC-CD150 EX/EZC-CD150M (STD & LT)		EZC-CD150 EX/EZC-CD150M (WT)		EZC-CD150XL/EZC-CD150XLS (LGP)	
Base weight with Semi-U blade w/tilt, drawbar, standard equipment, cab ROPS/FOPS, full fuel tank, and 79 kg (175 lb) operator	STD 26 660 kg (58,775 lb) LT 20 810kg (45,878 lb)	STD 26 660 kg (45,768 lb) LT 20 910kg (46,099 lb)	26 315 kg (57,981 lb)	26 315 kg (57,981 lb)	26 315 kg (57,981 lb)	26 315 kg (57,981 lb)
Optional Components						
Ripper single-shank type	1 546 kg (3,408 lb)	1 546 kg (3,408 lb)	1 546 kg (3,408 lb)	-	-	-
Ripper 3-shank type	1 743 kg (3,843 lb)	1 743 kg (3,843 lb)	1 554 kg (3,427 lb)	-	-	2 160 mm (85 in)
Track shoes	508 mm (20 in)		762 mm (30 in)		940 mm (37 in)	
508 mm (20 in)	-		-877 kg (-1,933 lb)		-	
560 mm (22 in)	125 kg (276 lb)		-740 kg (-1,631 lb)		-	
610 mm (24 in)	265 kg (584 lb)		-585 kg (-1,290 lb)		-	
660 mm (26 in)	406 kg (895 lb)		-430 kg (-948 lb)		-1 100 kg (-2,425 lb)	

	EZC-CD150 (STD & LT)	EZC-CD150 EX (LGP)	EZC-CD150M (STD & LT)	EZC-CD150XLS (LGP)
Base weight with Semi-U blade w/tilt, drawbar, standard equipment, cab ROPS/FOPS, full fuel tank, and 79 kg (175 lb) operator	STD 24 100 kg (53,131 lb) LT 24 200 kg (53,352 lb)	25 230 kg (55,623 lb)	STD 24 250 kg (53,462 lb) LT 24 810 kg (54,700 lb)	25 280 kg (55,733 lb)
Optional Components				
Ripper single-shank type	2 737 kg (6,033 lb)		2 737 kg (6,033 lb)	
Ripper 3-shank type	3 301 kg (7,277 lb)	-	3 301 kg (7,277 lb)	-
Track shoes				
610 mm (24 in)	176 kg (388 lb)	-	176 kg (388 lb)	-
660 mm (26 in)	336 kg (775 lb)	-	336 kg (775 lb)	-

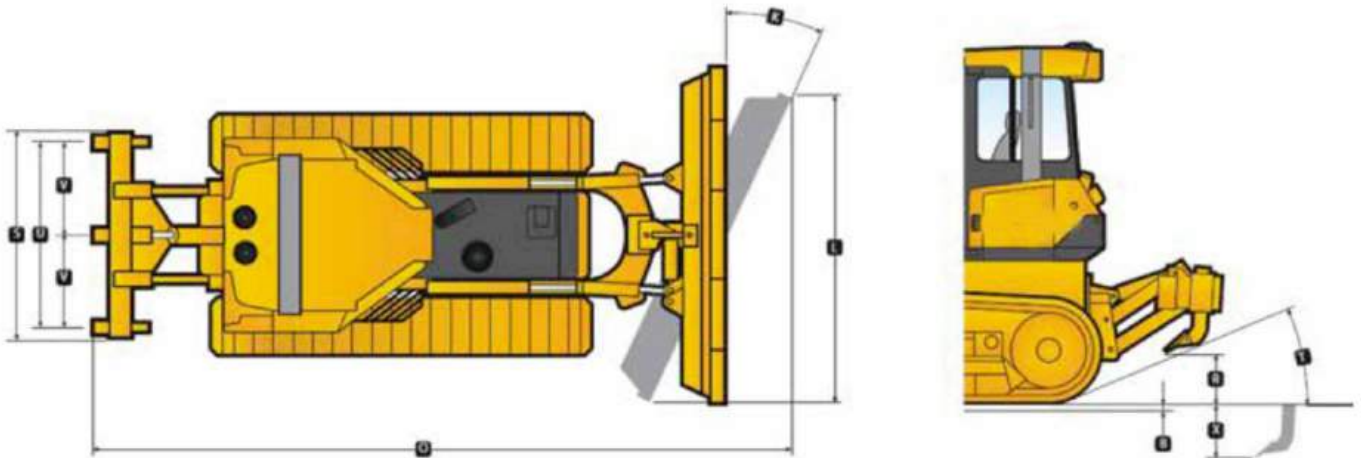


MACHINE DIMENSIONS

	EZC-CD150 (STD & LT)		EZC-CD150 (LGP)			
	Vpat/Semi-U / 6-way		Straight / 6-way			
A Overall height -ROPS	3 410 mm (134 in)		3 440 mm (135 in)			
B Grouser height	65 mm (2.56 in)		65 mm (2.56 in)			
C Ground clearance	405 mm (15.9 in)		430 mm (16.9 in)			
D Overall length, base machine	STD 6 027 mm (237 in) / LT 6 027 mm (237 in)		6 250 mm (165 in)			
D1 Length with blade and drawbar	STD 6 060 mm (238 in) / LT 6 060 mm (238 in)		6 200 mm (244 in)	6 250 mm (246 in)		
D2 Length with blade and 3-shank ripper	STD 6 300 mm (20' 8") LT 6 870 mm (22' 1.6")	STD 6 490 mm (21' 4") LT 6 720 mm (22' 1")	-			
E Track length on ground	STD 3 110 mm (122 in) / LT 3 170 mm (125 in)		3 170 mm (125 in)			
F Width over track	2 490 mm (98 in)		3 050 mm (120 in)			
			TD-14M Extra (LGP)	TD-14R (LGP)		
F1 Width over trunnions	2 710 mm (8' 11")	2 760 mm (9' 1")	3 305 mm (10' 10")	3 400 mm (11' 2")		
G Track gauge	1 880 mm (74")	1 930 mm (76")	2 136 mm (84")	2 240 mm (88")		
	EZC-CD150 EX/EZC-CD150M (STD & LT)		EZC-CD150 EX/EZC-CD150M (WT)		EZC-CD150 EX/EZC-CD150M (LGP)	
	Semi-U	Angle	Semi-U	6-way	Straight	6-way
A Overall height - FOPS cab	3,350 mm (132 in)					
A1 Overall height -ROPS	3,450 mm (136 in)					
B Grouser height	64 mm (2.52 in)					
C Ground clearance	445 mm (17.5 in)					
D Overall length, base machine	STD 4 050 mm (13' 3.3") LT 4 220 mm (13' 10")	4 220 mm (13' 10")	4 220 mm (13' 10")	4 220 mm (13' 10")	4 220 mm (13' 10")	4 220 mm (13' 10")
D1 Length with blade	STD 5 230 mm (17' 2") LT 5 670 mm (18' 7")	STD 5 390 mm (17' 8") LT 5 830 mm (19' 2")	5 670 mm (18' 7")	5 870 mm (19' 3")	5 520 mm (18' 1")	5 870 mm (19' 3")
D2 Length with blade and 1-shank /3-shank ripper	STD 6 250 mm/ 6 480 mm (20' 6"/21' 3") LT 6 760 mm/ 6 910 mm (22' 2"/22' 8")	STD 6,400 mm/ 6 550 mm (21' 6") LT 6 840 mm/ 6 990 mm (22' 5"/22' 11")	6 790 mm/ 6 940 mm (22' 3"/22' 9")	6 880 mm/ 7 030 mm (22' 7"/23' 1")	-	-
E Track length on ground	STD 2 640 mm (104 in) LT 3 050 mm (120 in)	3 050 mm (120 in)	3 050 mm (120 in)	3 050 mm (120 in)	3 050 mm (120 in)	3 050 mm (120 in)
F Width over track	2 440 mm (96 in)	2 440 mm (96 in)	2 790 mm (110 in)	2 790 mm (110 in)	3 100 mm (122 in)	3 100 mm (122 in)
F1 Width over trunnions	2 810 mm (110.6 in)	2 810 mm (110.6 in)	2 910 mm (114.5 in)	-	3 340 mm (131.5 in)	-
G Track gauge	1 930 mm (76 in)	1 930 mm (76 in)	2 030 mm (80 in)	2 030 mm (80 in)	2 160 mm (85 in)	2 160 mm (85 in)
EZC-CD150XL/EZC-CD150XLS						
A Overall height - FOPS cab	3 480 mm (137 in)					
A1 Overall height - ROPS	3 570 mm (141 in)					
A2 Overall height - end of exhaust pipe	3 930 mm (12' 11")					
B Grouser height	67 mm (2.63 in)					
C Ground clearance	460 mm (18.1 in)					
D Overall length, base machine	4,340 m (171 in)					
D1 Length with blade	STD 5 690 m (18' 8") / LT 5 910 m (19' 5")					
D2 Length with blade and 1-shank /3-shank ripper	STD 6.89 m / 7.05 m (22' 7"/23' 2") / LT 7.11 m / 7.27 m (23' 4"/23' 10")					
E Track length on ground	STD 2 860 mm (113 in) / LT 3 080 mm (121 in)					
F Width over track	2 540 mm (100 in)					
F1 Width over trunnions	2 890 mm (9 ft 6 in)					
G Track gauge	1 980 mm (78 in)					

RIPPER

	EZC-CD150		EZC-CD150 EX/EZC-CD150M		EZC-CD150XL/EZC-CD150XLS
	Multi-shank (3-shank)	Single-shank	Multi-shank (3-shank)	Single-shank standard	Multi-shank (3-shank)
R Maximum clearance under tip (raised)	568 mm (22 in)	485 mm (19 in)	455 mm (17.9 in)	538 mm (21.2 in)	596 mm (23.5 in)
S Overall beam width	2 040 mm (80.3 in)	1 100 mm (43 in)	2 230 mm (88 in)	1 383 mm (54 in)	2 130 mm (84 in)
T Slope angle (full raise)	25 deg				
U Ripping width	1 980 mm (74 in)	-	2 030 mm (6' 8")	-	1 982 mm (78 in)
V Spacing center to center	940 mm (37 in)	-	1 015 mm (3' 4")	-	991 mm (39 in)
X Maximum penetration	660 mm (26 in)	713 mm (28 in)	600 mm (24 in)	834 mm (32.8 in)	700 mm (27.6 in)
Z Maximum pitch adjustment	-	-	-	25 deg	25 deg
Penetration force	67 kN (15,062 lb)	71.04 kN (15,970 lb)	64 kN (14,387 lb)	89.99 kN (20,230 lb)	91.1kN (20,479 lb)
Pryout force	191 kN (42,937 lb)	390.9 kN (87,874 lb)	268.7 kN (60,404 lb)	272.3 kN (61,213 lb)	282.2kN (63,439 lb)
Shank positions (vertical)	2				
Weight of ripper w/ 1 shank	1 422 kg (3,135 lb)	1 546 kg (3,408 lb)	1 554 kg (3,427 lb)	2 845 kg (6,272 lb)	2 900 kg (6,400 lb)
Weight of shank	111 kg (245 lb)	111 kg (245 lb)	94.5 kg (208 lb)	-	196 kg (432 lb)
	Parallelogram ripper			Parallelogram ripper with hydraulic pitch adjustment	



BLADE SPECS

	EZC-CD150 (STD & LT)		MV-CD150 (LGP)	
Type	Semi-U	6-way	Straight	6-way
SAE capacity	5.80 m ³ (7.5 yd ³)	5.9 m ³ (7.7 yd ³)	6.05 m ³ (7.9 yd ³)	5.8 m ³ (7.5 yd ³)
H Blade height	1 400 mm (55 in)	1 400 mm (55 in)	1 220 mm (48 in)	1 170 mm (46 in)
I Blade width	4 200 mm (165 in)	3 220 mm (147 in)	4 200 mm (165 in)	3,830 mm (151 in)
J Blade lift height	STD 990 mm (39 in) LT 1 060 mm (42 in)	STD 1 090 mm (42.9 in) LT 1 086 mm (42.7 in)	1 056 mm (41.6 in)	1 085 mm (42.7 in)
K Blade angle	-	18,5 deg	-	18,5 deg
L Blade digging depth	STD 515 mm (20.3 in) LT 500 mm (19.7 in)	STD 580 mm (22.8 in) LT 536 mm (21.1 in)	500 mm (19.7 in)	536 mm (21.1 in)
M Maximum tilt	STD 545 mm (22 in) LT 510 mm (20 in)	510 mm (20 in)	595 mm (23 in)	595 mm (23 in)
N Maximum blade pitch adjustment	22 deg	22 deg	22 deg	22 deg
O Overall width with blade angled	-	3 055 mm (10 ft)	-	3 635 mm (11 ft 11 in)

		TRACKS		SHOES	
		Track gauge	Track length on ground	Shoes, each side	Shoe width
EZC-CD150	(Standard)	2 250 mm (88 in)	3 110 mm (122 in)	46	910 mm (36 in)
EZC-CD150	(LT)	2 220 mm (87 in)	3 170 mm (125 in)	46	560 mm (22 in)
EZC-CD150	(LGP)	2 136 mm (84 in)	3 170 mm (125 in)	46	915 mm (36 in)
EZC-CD150EX	(Standard)	1 930 mm (76 in)	2 640 mm (104 in)	39	508 mm (20 in)
EZC-CD150 EX	(LT)	1 930 mm (76 in)	3 050 mm (120 in)	43	508 mm (20 in)
EZC-CD150 EX	(WT)	2 030 mm (80 in)	3 050 mm (120 in)	43	762 mm (30 in)
EZC-CD150 EX	(LGP)	2 160 mm (85 in)	3 050 mm (120 in)	43	940 mm (37 in)
EZC-CD150M	(Standard)	1 930 mm (76 in)	2 640 mm (104 in)	39	508 mm (20 in)
EZC-CD150M	(LT)	1 930 mm (76 in)	3 050 mm (120 in)	43	508 mm (20 in)
EZC-CD150M	(WT)	2 030 mm (80 in)	3 050 mm (120 in)	43	762 mm (30 in)
EZC-CD150M	(LGP)	2 160 mm (85 in)	3 050 mm (120 in)	43	940 mm (37 in)
EZC-CD150XL	(Standard)	1 980 mm (78 in)	2 860 mm (113 in)	40	560 mm (22 in)
EZC-CD150XL	(LT)	1 980 mm (78 in)	3 080 mm (121 in)	42	560 mm (22 in)
EZC-CD150XL	(LGP)	2 180 mm (86 in)	3 080 mm (121 in)	42	864 mm (34 in)
EZC-CD150XLS	(Standard)	1 980 mm (78 in)	2 860 mm (113 in)	40	560 mm (22 in)
EZC-CD150XLS	(LT)	1 980 mm (78 in)	3, 80 mm (121 in)	42	560 mm (22 in)
EZC-CD150XLS	(LGP)	2 180 mm (86 in)	3 080 mm (121 in)	42	864 mm (34 in)

BLADES

The Semi-U Blade design combines the penetration ability of a straight blade with the increased capacity provided by short wings. It is ideal for applications like road and highway construction.

The 6-way blade control system is designed for performance and final grade control. With its motion capabilities, these blades are adept at finish grade work in construction and landscaping applications.

EZCON also offers large blades for increased capacity and incorporating full width cutting edges for prolonged durability.

Cutting edge angles and blade mouldboard geometry are designed to provide a balance between fine-light dozing and aggressive heavy material movement. This enables the dozers to perform at maximum productivity over a broader variety of applications.

All blades can be equipped with hydraulic blade tilt and angle as well as manual blade pitch adjustment to increase the versatility of the dozer.



Blades (Standard)	EZC-CD150 (Standard)	EZC-CD150EX (Standard)	EZC-CD150M (Standard)	EZC-CD150XL (Standard)	EZC-CD150XLS (Standard)
Types	6-way; Semi-U	Semi-U; Angle	Semi-U; Angle	Semi-U; Full-U; Angle; Straight	Semi-U; Full-U; Angle; Straight
SAE capacity	3.2 m (4.2 yd) - 5.80 m (7.5 yd)	3.80 m (5.0 yd) - 7.04 m (9.2 yd)	3.80 m (5.0 yd) - 7.04 m (9.2 yd)	3.88 m (5.1 yd) - 8.45 m (11.1 yd)	3.88 m (5.1 yd) - 8.45 m (11.1 yd)

STANDARD EQUIPMENT EZC-CD150 SERIES

ENGINE

NT855-C280S10, EU/III/Stage IIIA, turbocharged, direct start, direct injection, 175 kW (235 Hp)
Antifreeze, -37°C (-34°F)
Cooling module; includes radiator, transmission oil cooler, charge air cooler; isolation mounted
Exhaust pipe extension with elbow
Filters, engine oil, full flow and by-pass with replaceable "spin-on" elements
Strainers, fuel and hydraulic tank
Muffler, under engine hood, insulated
Water separator, fuel system
Air cleaner, dry type, dual stage with dust discharge valve
Fan, belt-driven, blower

DRIVETRAIN

Torque converter, single stage
Transmission, power shift, 3 speeds forward, 3 reverse, combined with 2 speed steering provides 6 speeds forward, 6 reverse, preset travel speed selection and auto-downshift
Steering, planetary type, 2 speed, left hand single lever control (joystick)
Filters, power train, equipment hydraulics, "spin-on" micro glass type
Brakes, foot, spring applied, hydraulically released
Decelerator - right foot pedal, and brake - center foot pedal
Final drive, 2-stage

OPERATOR'S ENVIRONMENT

Air conditioner/heater/pressurizer/defroster, underseat mounted, A/C condenser behind roof
AM/FM radio ready
Cab with 2 post ROPS, with sound suppression, 4 wipers w/ washers, inside mirror, dome light, tinted safety glass and air recirculation system (approved according to ROPS - SAE J1040 and FOPS - SAE J231)
Seat, air suspension type, adjustable with arm rests, swivel 14° to right
Seat belt (SAE J386) - 3" wide retractable
Sun visor for front cab window
Tools compartment

INSTRUMENTATION

Engine ECM failure warning lights and switches
Gear, range, drive train and engine diagnostic display
Gauges: fuel level, engine coolant temperature, engine oil pressure, drive train system oil temperature, voltmeter, hourmeter, tachometer
Warning lights: air cleaner filter, drive train oil filters, hydraulic oil filters, transmission/clutch oil low pressure, coolant high temperature, drive train oil high temperature, fan drive oil filter, engine inlet air heater
Audible and visual warning system: low engine coolant level, low engine oil pressure

ELECTRICAL

Alarm, back-up
Dual batteries 12 V, 960 CCA, cold start, maintenance free
Horn, electric
Lights for cab, 2 front, 2 rear
Lights with guards, 2 front - lift cylinders mounted, 2 rear - fuel tank mounted
Receptacle, starting/charging plug
Starting, 24 V
Starting aid - air grid heater
Alternator 50/80 A

UNDERCARRIAGE (STD)

Track adjusters, hydraulic
Track chain, sealed and lubricated (LTS) with split master link, 40 links
Track chain center guides
Track chain end guides, integral
Track shoes, 560 mm (22 in) square corner
Track frame, 7 roller, 1 880 mm (74 in) gauge, oscillating type, lifespan lubricated rollers and idlers

UNDERCARRIAGE (LT)

Track adjusters, hydraulic
Track chain, sealed and lubricated (LTS) with split master link, 46 links
Track chain center guides
Track chain end guides, integral
Track shoes, 560 mm (22 in) square corner
Track frame, 8 roller, 1,880 mm (74 in) gauge, oscillating type, lifespan lubricated rollers and idlers

UNDERCARRIAGE (LGP)

Track adjusters, hydraulic
Track chain center guides
Track chain end guides, integral
Track chain, sealed and lubricated (LTS) with split master link, 46 links
Track frame, 8 roller, 2 136 mm (84 in) gauge, oscillating type, lifespan lubricated rollers and idlers
Track shoes, 915 mm (36 in) square corner

GUARDS

Crankcase, hinged, with front pull hook, transmission, fan, radiator, sprocket rock and dirt deflector
Engine hood, solid, sloped
Engine side doors, hinged, perforated type
Final drive seal guard
Radiator guard door, louvered, hinged
Tank guard, bolted (0.5 in plate protects fuel tank and hydraulic reservoir). Includes deduct for standard rear access platform

HYDRAULIC CONTROLS

3-spool valve, 1 lever with pilot operated blade control (lift/tilt), ready for ripper

OTHER STANDARD EQUIPMENT:

Diagnostic centers for power train and equipment hydraulic pressures
Ecological drains for engine oil, radiator coolant and hydraulic oil
Hitch, retrieval
Manuals, parts and operator's
Rear access steps